

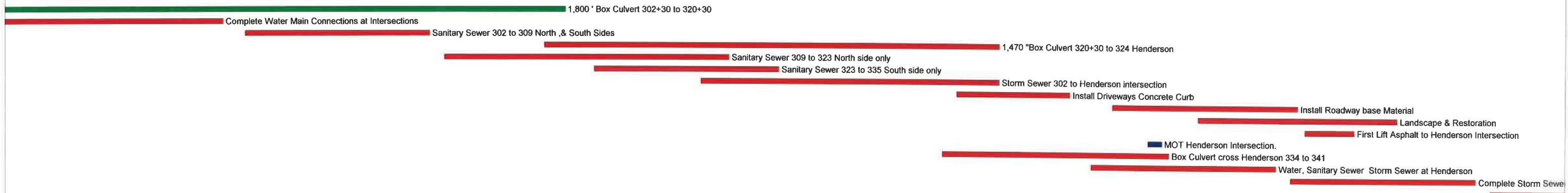
Activity ID	Description	Orig Dur	Rem Dur	Early Start	Early Finish	2019																											
						JUN 03	10	17	24	01	08	JUL 15	22	29	05	AUG 12	19	26	02	09	SEP 16	23	30	07	OCT 14	21	28	NOV 04	11				
1000	PH 2 -3 Manhattan-Watrous -Henderson -Dale M.	306	306	03/JUN/19	06/AUG/20	[Gantt chart bars for activities 1000-1275]																											
1005	Tree Trim / Removal to Jetton St.	3	3	10/JUN/19	12/JUN/19	[Gantt chart bar]																											
1008	Close Manhattan / Estrella intersection	1	1	17/JUN/19	17/JUN/19	[Gantt chart bar]																											
1010	Water Main Manhattan to South of Neptune St.	14	14	17/JUN/19	05/JUL/19	[Gantt chart bar]																											
1012	300' Box culvert from intersection to Clear Ave.	18	18	01/JUL/19	25/JUL/19	[Gantt chart bar]																											
1015	Storm System, Buffle Box @ Estrella.	6	6	24/JUN/19	01/JUL/19	[Gantt chart bar]																											
1025	Underdrain-Permeable pavers	15	0	10/JUL/19 A	02/AUG/19	[Gantt chart bar]																											
1028	Restoration Estrella -Manhattan Intersection	10	0	29/JUL/19 A	09/AUG/19	[Gantt chart bar]																											
1030	Open Estrella - Manhattan Intersection	1	0	10/AUG/19	12/AUG/19	[Gantt chart bar]																											
1033	Close Manhattan Av - Neptune St Intersection	1	1	12/AUG/19	12/AUG/19	[Gantt chart bar]																											
1035	Water Main Neptune St Intersection	8	8	12/AUG/19	21/AUG/19	[Gantt chart bar]																											
1036	Water Main Neptune to Zelar st.	6	6	21/AUG/19	28/AUG/19	[Gantt chart bar]																											
1038	Install 300' Box Culvert to Neptune St.	16	16	25/JUL/19	15/AUG/19	[Gantt chart bar]																											
1043	Flowable Fill at exist. Sewer 206+80 to 208+80	14	14	18/JUL/19	06/AUG/19	[Gantt chart bar]																											
1045	Storm System & J Box & 43x68 ERCP @ Neplune	10	10	14/AUG/19	27/AUG/19	[Gantt chart bar]																											
1047	Box Culvert across Neplune	3	3	27/AUG/19	29/AUG/19	[Gantt chart bar]																											
1048	Install Buffle Box at Neplune	4	4	20/AUG/19	23/AUG/19	[Gantt chart bar]																											
1049	Concrete curb driveways	12	12	05/SEP/19	20/SEP/19	[Gantt chart bar]																											
1052	Road Restoration Base	5	5	10/SEP/19	16/SEP/19	[Gantt chart bar]																											
1055	First Lift of Asphalt to Neptune intersection	1	1	18/SEP/19	18/SEP/19	[Gantt chart bar]																											
1058	Open Neptune St. Intersection	1	1	23/SEP/19	23/SEP/19	[Gantt chart bar]																											
1060	Close Manhattan Av -Watrous St. intersection	1	1	23/SEP/19	23/SEP/19	[Gantt chart bar]																											
1062	Water Main Watrous intersection	10	10	23/SEP/19	04/OCT/19	[Gantt chart bar]																											
1064	Install box culvert @ Watrous Intersection	6	9	09/SEP/19	19/SEP/19	[Gantt chart bar]																											
1065	600' Box Culvert to Watrous Intersection	22	22	26/SEP/19	25/OCT/19	[Gantt chart bar]																											
1070	Install Box Culvert at Watrous Intersection	8	8	28/OCT/19	06/NOV/19	[Gantt chart bar]																											
1075	Complete Final Storm Connections to BC	6	6	14/OCT/19	21/OCT/19	[Gantt chart bar]																											
1085	Install Driveways / Concrete curb	8	8	24/OCT/19	04/NOV/19	[Gantt chart bar]																											
1087	Landscape and Restoratoin	10	10	23/OCT/19	05/NOV/19	[Gantt chart bar]																											
1090	Install Roadway Base material	6	6	29/OCT/19	05/NOV/19	[Gantt chart bar]																											
1095	First Lift of Asphalt & Watrous intersection.	1	1	06/NOV/19	06/NOV/19	[Gantt chart bar]																											
1098	Open Watrous/ Manhattan Intersection	1	1	06/NOV/19	06/NOV/19	[Gantt chart bar]																											
1115	3'x5' Box Culvert Jetton Av. to Watrous	14	14	05/AUG/19	22/AUG/19	[Gantt chart bar]																											
1117	Instal Buffle Box # 229 and Storm system	4	4	19/AUG/19	22/AUG/19	[Gantt chart bar]																											
1120	Storm System West side of Manhattan	12	12	23/AUG/19	09/SEP/19	[Gantt chart bar]																											
1125	Install Sidewalk/ Driveways / Curb	8	8	16/SEP/19	25/SEP/19	[Gantt chart bar]																											
1130	Road Base material / Restoration	8	8	26/SEP/19	07/OCT/19	[Gantt chart bar]																											
1135	Concrete Curb - Driveways	6	6	07/OCT/19	14/OCT/19	[Gantt chart bar]																											
1138	Landscape Restoration	10	10	14/OCT/19	25/OCT/19	[Gantt chart bar]																											
1140	Asphlat Work Watrous to JettonAv.	1	1	05/NOV/19	05/NOV/19	[Gantt chart bar]																											
1143	PHASE Watrous - Henderson -Dale Mabry	0	0	20/MAY/19	20/AUG/20	[Gantt chart bar]																											
1148	Tree Trim /removal Watrous Av. to Henderson Blvd	7	7	13/JUN/19	21/JUN/19	[Gantt chart bar]																											
1150	2,680' HDD Water Watros - Henderson	16	16	05/AUG/19	26/AUG/19	[Gantt chart bar]																											
1155	1,800' Box Culvert 302+30 to 320+30	60	60	05/NOV/19	29/JAN/20	[Gantt chart bar]																											
1157	Complete Water Main Connections at Intersections	44	44	14/OCT/19	12/DEC/19	[Gantt chart bar]																											
1159	Sanitary Sewer 302 to 309 North ,& South Sides	18	18	16/DEC/19	10/JAN/20	[Gantt chart bar]																											
1161	1,470 "Box Culvert 320+30 to 324 Henderson	46	46	27/JAN/20	30/MAR/20	[Gantt chart bar]																											
1163	Sanitary Sewer 309 to 323 North side only	30	30	13/JAN/20	21/FEB/20	[Gantt chart bar]																											
1165	Sanitary Sewer 323 to 335 South side only	20	20	03/FEB/20	28/FEB/20	[Gantt chart bar]																											
1168	Storm Sewer 302 to Henderson intersection	30	30	18/FEB/20	30/MAR/20	[Gantt chart bar]																											
1170	Install Driveways Concrete Curb	12	12	25/MAR/20	09/APR/20	[Gantt chart bar]																											
1174	Install Roadway base Material	18	18	16/APR/20	11/MAY/20	[Gantt chart bar]																											
1178	Landscape & Restoration	20	20	28/APR/20	25/MAY/20	[Gantt chart bar]																											
1180	First Lift Asphalt to Henderson Intersection	5	5	13/MAY/20	19/MAY/20	[Gantt chart bar]																											
1188	MOT Henderson Intersection.	2	0	21/APR/20	22/APR/20	[Gantt chart bar]																											
1190	Box Culvert cross Henderson 334 to 341	24	24	23/MAR/20	23/APR/20	[Gantt chart bar]																											
1195	Water, Sanitary Sewer Storm Sewer at Henderson	20	20	13/APR/20	08/MAY/20	[Gantt chart bar]																											
1198	Complete Storm Sewer and final connections	20	20	11/MAY/20	05/JUN/20	[Gantt chart bar]																											
1200	Complete Sidewalk / Driveways / curb	18	18	08/JUN/20	01/JUL/20	[Gantt chart bar]																											
1210	Install Roadway Base Material	8	8	29/JUN/20	08/JUL/20	[Gantt chart bar]																											
1218	Complete Landscape /Restoration	20	0	24/JUN/20	21/JUL/20 A	[Gantt chart bar]																											
1225	Install First Lift of Asphalt	2	2	22/JUL/20	23/JUL/20	[Gantt chart bar]																											
1230	Friction Course all the site	14	14	24/JUL/20	12/AUG/20	[Gantt chart bar]																											
1255	Striping , Signalization	5	5	12/AUG/20	18/AUG/20	[Gantt chart bar]																											
1265	Punch Out Work	25	0	17/JUL/20 A	20/AUG/20	[Gantt chart bar]																											
1275	Final Completion	3	3	18/AUG/20	20/AUG/20	[Gantt chart bar]																											

Start date 03/JUN/19
 Must finish date 28/AUG/20
 Data date 03/JUN/19
 Run date 16/MAY/19
 Page number 1A
 © Primavera Systems, Inc.



Intersection
 Box Culvert at Watrous Intersection
 Concrete
 Driveways / Concrete curb
 and Restoration
 Roadway Base material
 First Lift Asphalt & Watrous intersection.
 Storm Sewer / Manhattan Intersection

Work Watrous to Jetton Av.

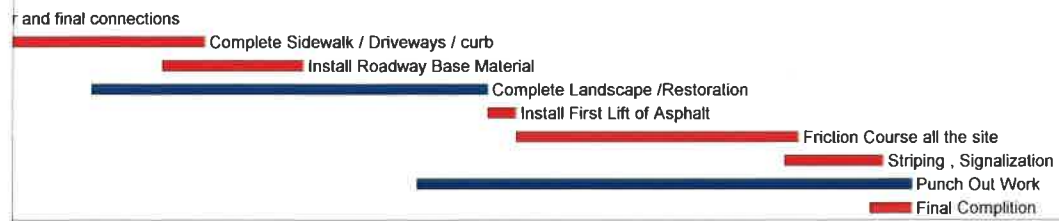


Start date 03/JUN/19
 Must finish date 28/AUG/20
 Data date 03/JUN/19
 Run date 16/MAY/19
 Page number 1B
 © Primavera Systems, Inc.



PH 2 -3 Manhattan-Watrous -Henderson -Dale M.

PHASE Watrous - Henderson -Dale Mabry



Start date 03/JUN/19
 Must finish date 28/AUG/20
 Data date 03/JUN/19
 Run date 16/MAY/19
 Page number 1C
 © Primavera Systems, Inc.